

SILVEREDGE COOPERATIVE
SUMMER 2018

47 107.8682

Ag

Silver

Edge



“WORKING
FOR YOU,
YOUR
FAMILY
AND YOUR
FUTURE”

SilverEdge Cooperative
39999 Hillton Road
Edgewood, IA 52042

SilverEdge Cooperative

In This Issue

VFD and the Farmer.....	2
Mangers' Report.....	3
Animal Nutrition Update.....	4
Summer Cattle Tours.....	5
Summer Spotlight.....	6
Portable Creed Feeder.....	7
Toggle.....	8

Main Office

39999 Hilton Rd
Edgewood IA, 52042
563-928-6419
www.silveredgecoop.com

Locations

• Strawberry Point • Delhi

Mission Statement

"Our mission is to provide superior customer service and knowledge of the many agricultural fields while working with our customers to see them strive for success. We are dedicated to our work and the always changing fields of Agriculture."



A VFD and the Farmer Responsibility

When January 1st 2017 came around, it changed the way farmers dispersed certain medications to their livestock. Now we are nearly 18 months into this and many producers are not aware of the regulations that they must follow. As the client, "producer", there are certain responsibilities that you have.

What are my responsibilities as the "client"?

As the client, a producer must:

- Only feed animal feed bearing or containing a VFD drug or a combination VFD drug (a VFD feed or combination VFD feed) to animals based on a VFD issued by a licensed veterinarian.
- Do not feed a VFD feed or combination VFD feed to animals after the expiration date on the VFD.
- Provide a copy of the VFD order to the feed distributor if the issuing veterinarian sends the distributor's copy of the VFD through you, the client.
- **Maintain a copy of the VFD order for a minimum of 2 years; and provide VFD orders for inspection and copying by FDA upon request.**

If you have questions as to what this means for you, or more questions about what you should be doing to be in compliance, please do not hesitate to contact your SilverEdge Feed Representative or give us a call at the Edgewood office, 563.928.6419.

Just a reminder, checks need to be in the office by the 10th of every month in order to get the discount. Fuel must be paid within 5 days after delivery to receive a .04¢ per gallon discount.

Managers' Report

Tony Hemann • General Manager, CEO • tonyh@silveredgecoop.com

Dear Members;

The 4th of July has come and gone and we are all wondering how did we get here so fast; where did the time go! We have been very fortunate in this area, as the weather has treated us kindly compared to other parts of Iowa. You don't have to travel very far to see the effects of excessive rain and delayed planting. The crops here look very good compared to those areas.

Tariffs, world markets, embargos, Brazil and Argentina grain production and the weather, all of these are factors or *excuses* being used to explain the decrease of our grain markets. Is the market going to rally, continue downward or start to stabilize? Great questions that no one has an answer for. There is certainly going to be some type of movement with this grain market and to have sell orders in place to take advantage of these movements could be a good thing for you to have. If you were able to market your grain earlier into a better market than we are having now, that's great; if you haven't it's NOT too early to start lining up your storage needs for the fall.

The end of our fiscal year will also be here before we know it. As a reminder, ALL accounts are due and payable before the end of our fiscal year; accounts must be paid by noon on Thursday the 28th of August. If you for see this as being an issue or a problem for you, please give us a call or stop in and talk with us about it.

Hopefully you can take some time out of your busy schedule this summer and take in and enjoy the county fairs and other community celebrations in the area.

Have a safe and enjoyable summer!

Tony



Feed Ordering

VFD *Veterinary Feed Directive*

When ordering feed that contains a VFD it is important for SilverEdge to have a copy of the VFD prior to placing the feed order for us to deliver your feed in a timely matter.

Thus forward, VFD's MUST be sent to the SilverEdge Coop in Edgewood 1 day prior to placing the feed order that contains that VFD.

Thank you for your cooperation!

Grain Bank

Corn and Oats to be used for Grain Bank at SilverEdge Cooperative, MUST be delivered to SilverEdge a MINIMUM of 3 days before it can go out for feed.

Your Animal Nutrition Consultants at SilverEdge Cooperative:

Steve Schilling: Beef & Swine - 563.599.3917

Brittany Menke: Dairy - 563.543.0277

Lillie Beringer: Lifestyles - 563.451.2668

Safe-guard Promotion

FOR BEEF AND DAIRY CATTLE

25 lb. bag Safe-Guard

Alfalfa Based Pellets

- Single –day feeding
- No milk withdrawal for dairy cattle
- Top-dress at 1 lb. feed per 1,000 lb. cattle



10% discount on every 25 lb. bag purchased in July!



SilverEdge Co-op



Summer Cattle Tours



Hidden Costs in Cow/Calf Production

Bob Schilling
39587 Colesburg Road
Colesburg, Iowa 52052



Feedlot and Cow/Calf Silage Management

Nieman Farms
2357 Highway 38
Delhi, Iowa 52223



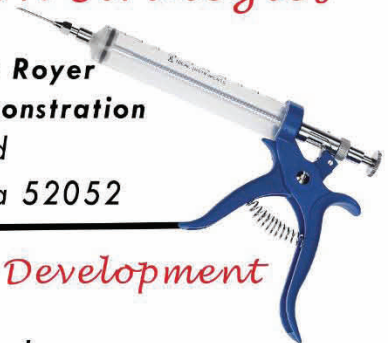
Vaccination Strategies

Cherne Farms
With Dr. Ryan Royer
On Farm Demonstration
33166 Kiln Road
Guttenberg, Iowa 52052



Heifer Selection and Development

Pine View Angus
37181 Colesburg Road
Colesburg, Iowa 52035



Feedlot Slatted Barn Tour

Wilson Farms
2319 Omega Road
Delhi, Iowa 52223



Meal served at 6:00PM followed
by tours at every location

Contact Steve Shilling at (563) 599-3917 or
Lillie Beringer at (563) 451-2668 for any questions!

Summer Spotlight

In every issue of Ag Edge, you will find an Employee Spotlight, which provides you a chance to get to know your cooperative's employees. In this issue, instead, you have the chance to get to know one of your SilverEdge Cooperative Board members.



Alex Keppler has been a member of the Cooperative for 10 years. Alex and his wife Brittany have two daughters; 3 year old Harper and their youngest Melanie whose 1. Alex shared his story with us and it goes a little like this, "I came back to the family farm after college in the spring of 2007. That year my dad rented me 40 acres that I planted to corn. In 2008 I had the opportunity to buy 38 acres from a neighbor. I am currently farming 350 acres, the bulk in row crops of corn and beans. The summer keeps us busy with making alfalfa. Back in 2015, I purchased half of the dairy herd and am currently milking 140 cows. We raise the steers up to slaughter weight." Alex is also a member of the Viafield Coop, Farm Bureau, ECI REC and has been involved with the Arlington Community Club. Alex says, "I am looking forward to being a positive member of the board. I hope to learn more about the inner workings of SilverEdge Cooperative."

Lillie Beringer

Lifestyles Production Specialist

**WELCOME TO
THE COOP
FAMILY!**

My name is Lillie Beringer and it is with great pleasure and excitement that I introduce myself as a new Purina LPS splitting time between SilverEdge Cooperative and IAS. I have grown up on a livestock and grain family farm outside of Cascade, Iowa my entire life and I am excited to start farming part-time with my dad. My family currently custom feeds 800 feeder cattle and I have started my own cow herd with the intent of expanding my herd each year. I also come from a strong equine background growing up with the rodeos and barrel racing and being a member of the horse judging and horse show team at Black Hawk East my first two years of college. Last summer I was a Purina feed sales intern at SilverEdge Cooperative where I knew after the summer was over that my passion for animals and love for working with people was all tied together with my internship. I recently graduated from Iowa State University in May with an Animal Science degree and am looking forward to starting my career as a member of the SilverEdge team.





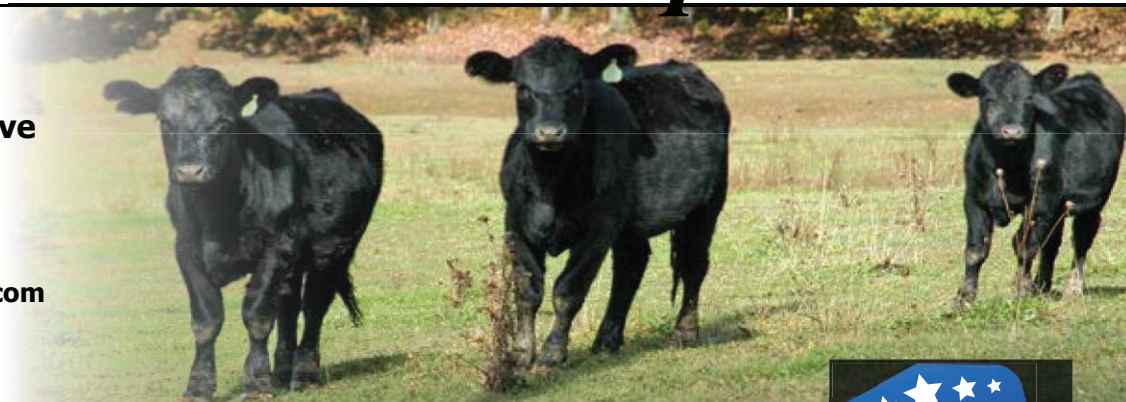
Portable Creep Feeder

SilverEdge Cooperative

39999 Hilton Rd
Edgewood, IA 52042

563-928-6419

www.silveredgecoop.com



LIVESTOCK



Features

- 146 Bu. capacity.
- Galvanized hopper with painted steel frame.
- 12 Ga. G90 galvanized bottom trough.
- 16 Ga. G90 galvanized hopper.
- Stabilizer stands in all four corners.
- Agitator for feed that bridges.
- Ground opening lid. Open lid with rails up.
- New ag tires and wheels.
- 2 1/4" spindles.
- 6 lug wheels on 6" circle hub.
- 4500 lb, EZ lube axles.
- Heavy duty rails. No bolts to raise or lower rail.
- Chain tie down for rails.





NOW is the TIME for TOGGLE!

Add Toggle® to your next field treatment to support kernel fill and better pollination this season.

CORN:

When applied at V5 to V6 through VT to R1 (tassel) to support plant health leading to improved kernel fill and pollination.

SOYBEANS:

When applied at R1 to R3, Toggle® supports plant health leading to improved environmental stress resistance, less pod abortion and higher yields.



US Toggle Tel: Brad Paschen (765)-427-5457

Tel: +1 902 428 2840 • info@acadian.ca

 ToggleByAcadian.com

 www.youtube.com/AcadianPlantHealth



©2018 Acadian Seaplants Limited. All rights reserved. Acadian Plant Health™ and Acadian BioSwitch™ are trademarks of Acadian Seaplants Limited. Toggle® is a registered trademark of Acadian Seaplants Limited.